



AMERICAN MADE SINCE 1981



EMERGENCY COMMUNICATIONS  
ELEVATOR LOAD WEIGHING  
MODULAR BARRICADE SYSTEMS  
K-TECH CONNECT 2-WAY TEXT & VIDEO

# LET US INTRODUCE OURSELVES

---

When our security phones were selected by the Office of the Architect of the Capitol for the new Capitol Visitor Center in Washington, D.C., we stepped back and thought about the remarkable journey that has brought us where we are today. Over 40 years ago, when K-Tech International began, we ran our operation out of a garage. Today, we have a research and development team that is staffed by some of the best engineers in the industry. We have a testing lab that other companies only dream about. And, we have products installed in buildings like the U.S. Capitol, the Pentagon, the University of Connecticut, and other similarly prominent places all over the world.

Our security phones have set new standards for the marketplace. All of our products are proudly made in the USA. Our Tech-support also is US-based, free, and rivaled by none. In 2010, we demonstrated just how confident we are in our products by adopting a no-questions-asked, 3-year warranty on our workmanship. We grew to become what we are today by a simple formula: faith, hard work, ingenuity & putting our customers first. We welcome your decision to benefit from our remarkable and blessed journey.



“By far the best tech support in the industry!”

“You guys make the best phones!”

“Thanks for your help! Calling this a win.”

“Thanks Brother - You are the best!”

“My favorite brand of phones.”

“Best tech support, you guys are wizards.”



# EXPLORE OUR PRODUCTS

## EMERGENCY PHONES

---

Residential Keypad Emergency Phones .....	1
Phone Line Powered ADA Emergency Phones .....	3
AC Powered ADA Emergency Phones .....	7

## MACHINE ROOM COMMUNICATION & LINE LOSS MONITORING

---

Machine Room Communication .....	11
Line Loss Monitoring .....	11

## EMERGENCY LIGHT KIT

---

Emergency Light Kit .....	12
---------------------------	----

## K-TECH CONNECT 2-WAY TEXT & VIDEO

---

Emergency Device System Overview.....	14
Lobby Station System Overview.....	15
System Components .....	16
Software Overview .....	21
FAQs .....	22

## ELEVATOR LOAD WEIGHING & PERFORMANCE SYSTEMS

---

Rope K-Weigh Systems .....	25
Cross-Head K-Weigh Systems .....	27

## MAINTENANCE & SAFETY BARRICADES

---

Corrugated Plastic Barricades .....	30
46 Series Grizzly Barricades.....	33
76 Series Grizzly Barricades .....	34



## VOICE & DATA CELLULAR GATEWAY

Introducing K-Tech's All-New Dual Air Cellular Gateway. Utilize cellular service to add a voice line and a data line to your emergency communication devices.

ET-CELL-VD1



THE FUTURE IS HERE

# GET TO KNOW OUR EMERGENCY PHONES

## 301 SERIES

Phone Line Powered  
Residential Keypad Phones

## 401 SERIES

Phone Line Powered  
Commercial ADA Phones

## 901 SERIES

AC Powered  
Commercial ADA Phones

### 301 SERIES

301 Series emergency phones are typically used in residential applications and are phone-line powered. This series is designed with an integrated keypad and requires no programming, simply dial out like you would with a typical telephone. The built-in speaker and microphone eliminates the need for a handset. These phones are compact, aesthetically pleasing and easy to install. COP and Flush Mount models available.

### 401 SERIES

401 Series emergency phones are phone-line powered, ADA compliant and are typically used in commercial applications such as elevators, area of refuge and any place where emergency communications are needed. These phones require programming which can be done on-site or remotely. Since these are phone-line powered, there is no back-up battery and only one phone can be used per incoming phone-line. COP, Flush Mount, Surface Mount, Cabinet Mount and Outdoor models are available, as well as optional weather protection.

### 901 SERIES

901 Series emergency phones are ADA compliant like our 401 Series and share the same application uses. One of the main distinctions is that these phones are AC powered and come equipped with a back-up battery which ensures 4+ hours of talk time in the case of a power failure. They include two hot keys, one for quick location message recording and the other for dial-out phone number programming. 901 Series phones can share a single incoming phone-line and are compatible with our line loss monitoring system. COP Mount, Flush Mount, Surface Mount, Cabinet Mount and Outdoor models are available, as well as optional weather protection.



PHONE LINE POWERED | KEYPAD

# RESIDENTIAL

## EMERGENCY PHONES

- Single Phone Per Line
- Phone Line Powered
- 24-52 VDC 30 mA

**301**  
**SERIES**

- 3 Mounting Styles
- Raised Keypad
- Hands-free Operation



**COMMANDER** keypad**301 SERIES**

Install Type **COP/Fixture Mount**  
 Size **6.5" H x 3" W x .7" D**

Our 301 Series Commander Keypad Phone is one of the best residential emergency phones on the market. With optional raised keys and choice of key colors, this phone is perfect for COP installations. Available directly from us or through your fixture manufacturer as well, just ask them!



**301 SERIES** ET301-OEM

**FORTRESS** keypad**301 SERIES**

Install Type **Flush Mount**  
 Faceplate Size **8" H x 4" W x .078" Thick**  
 Cutout Size **7" H x 3.5" W x 1" D**  
 Standard Finish **Brushed Stainless Steel**

The unique flush mount design of our 301 Series Fortress Keypad Phone can be made to match any elevator decor. Say goodbye to unsightly cabinet boxes and dangling handsets.



**301 SERIES** ET1301



Custom Finishes Available

**FORTRESS** keypad

## CUSTOM FINISHES

**301 SERIES**

Our 301 Series Fortress Keypad Phones are available in many custom finishes to match any decor.

Mirrored  
Stainless Steel

ET1301-089



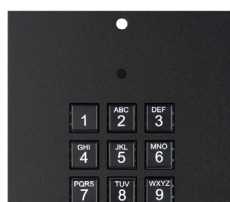
Brushed  
Bronze

ET1301-013



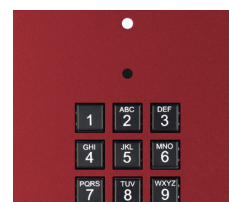
Black  
Powder Coat

ET1301-134



Red  
Powder Coat

ET1301-150



Oil Rubbed  
Brushed Bronze

ET1301-015





# PHONE LINE POWERED | ADA COMPLIANT

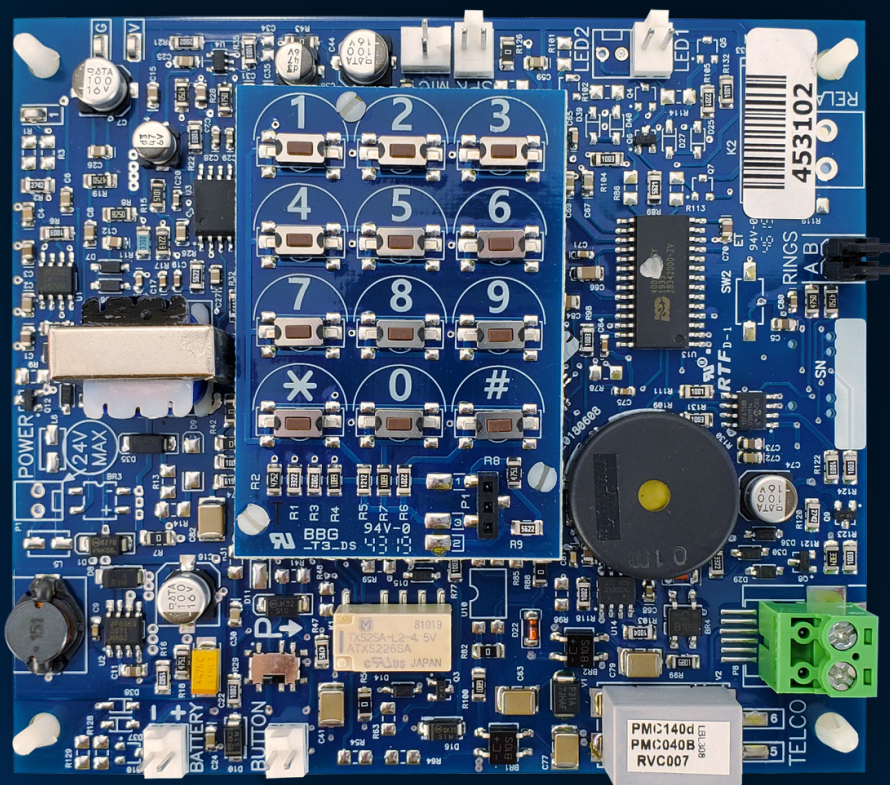
# COMMERCIAL

## EMERGENCY PHONES

- Simple Programming
- ADA Compliant
- 3 Year Warranty

# 401 SERIES

- Single Phone Per Line
- Cell System Ready
- Phone Line Powered





**SENTRY****401 SERIES**

Install Type	Cabinet/Box Mount
Size	7.5" H x 5" W x 2" D
Standard Finish	● Matte Red

Our phone line powered 401 Series Sentry model fits right into most existing telephone cabinets. This model comes standard with a red matte finish faceplate, and other matte finish colors are also available.

**401 SERIES** ET401A-3

Moisture Protection Available

**NAUTILUS****401 SERIES**

Install Type	Surface Mount
Size	6.75" H x 4.75" W x 2.25" D
Standard Finish	● Red

Looking for a weather sealed ADA emergency phone? Our phone line powered 401 Series Nautilus Emergency Phone is all-weather, which makes it perfect for outdoor installations wherever there is a high risk of water damage to ordinary phones.

**401 SERIES** ET401A-WS**LIBERATOR****401 SERIES**

Install Type	Surface Mount
Size	6.75" H x 6.25" W x 1" D
Standard Finish	● Brushed Stainless Steel

The phone line powered 401 Series Liberator's low profile makes it ideal for installations where space is limited or cutting a hole is not possible or economical. Custom finishes are available upon request.

**401 SERIES** ET401A-LPSS-3

Moisture Protection Available

**FORTRESS****401 SERIES**

Install Type	Flush Mount
Faceplate Size	12.5" H x 10" W x .125" Thick
Cutout Size	7.75" H x 5" W x 2" D
Standard Finish	● Brushed Stainless Steel

The 401 Series Fortress is typically used to either upgrade your cabinet mount units or simply replace old or damaged phone cabinets. It's also ideal for adding a phone where there is no existing cabinet.

**401 SERIES** ET1401A-3

Moisture Protection Available

**FORTRESS** mini**401 SERIES**

Install Type	Flush Mount
Faceplate Size	10.5" H x 6.5" W x .125" Thick
Cutout Size	7.75" H x 5" W x 2" D
Standard Finish	● Brushed Stainless Steel

The 401 Series Fortress Mini is the same as the Fortress but with a smaller faceplate for those tight fitting areas. Upgrade your cabinet mount units or simply replace old or damaged phone cabinets.

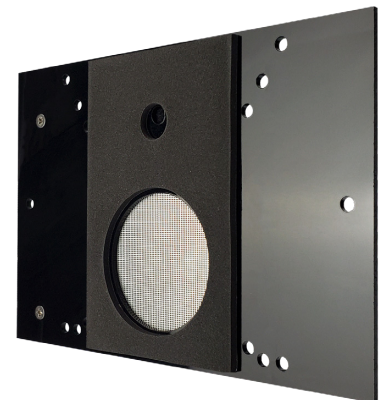
**401 SERIES** ET1401A-S-3

Moisture Protection Available

**UNIVERSAL COMMANDER****401 SERIES**

Install Type	COP / Fixture Mount
Size	4.75" H x 7" W x 1.5" D

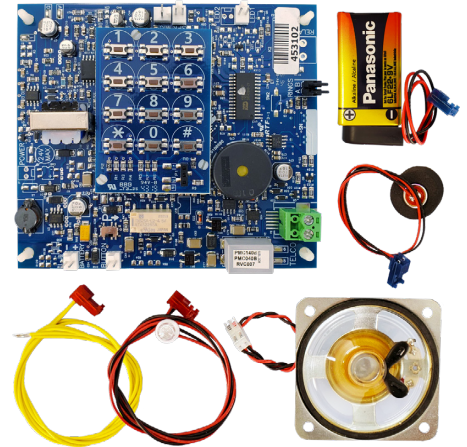
The 401 Series Universal Commander provides a seamless solution for replacing or upgrading fixture mount phones. This phone line powered emergency phone fits behind a single grill pattern for a clean symmetrical look.

**401 SERIES** ET401A-OEMU-3

**KIT PHONE****401 SERIES****KIT INCLUDES**

- 401 Series Phone
- 9v Battery
- Wired Speaker
- Adhesive Stand-offs
- Wired Microphone & LED
- Button Hook-up Wire

Our 401 Series Kit Phone can replace any phone line powered phone ADA emergency phone in the field, quickly & easily. Each kit includes all the wiring and parts necessary for a fully functioning phone.


**401 SERIES** ET-401LPC-KT
**KIT PHONE****UNIVERSAL**

Replace any ADA emergency phone on the market

**FLEXIBLE**

Mount anywhere, no fixture mods needed

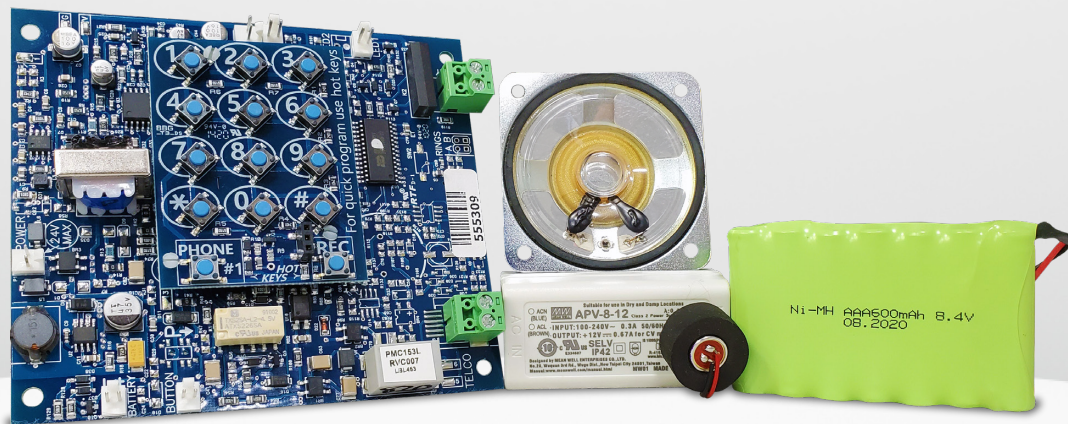
**ECONOMICAL**

Our kit phones save you time which saves you money

**PREFERRED**

Installers love having a few kit phones on hand for those rush jobs

**901 SERIES** ET-901PDL-KT

**401 SERIES** ET-401LPC-KT




AC POWERED | ADA COMPLIANT

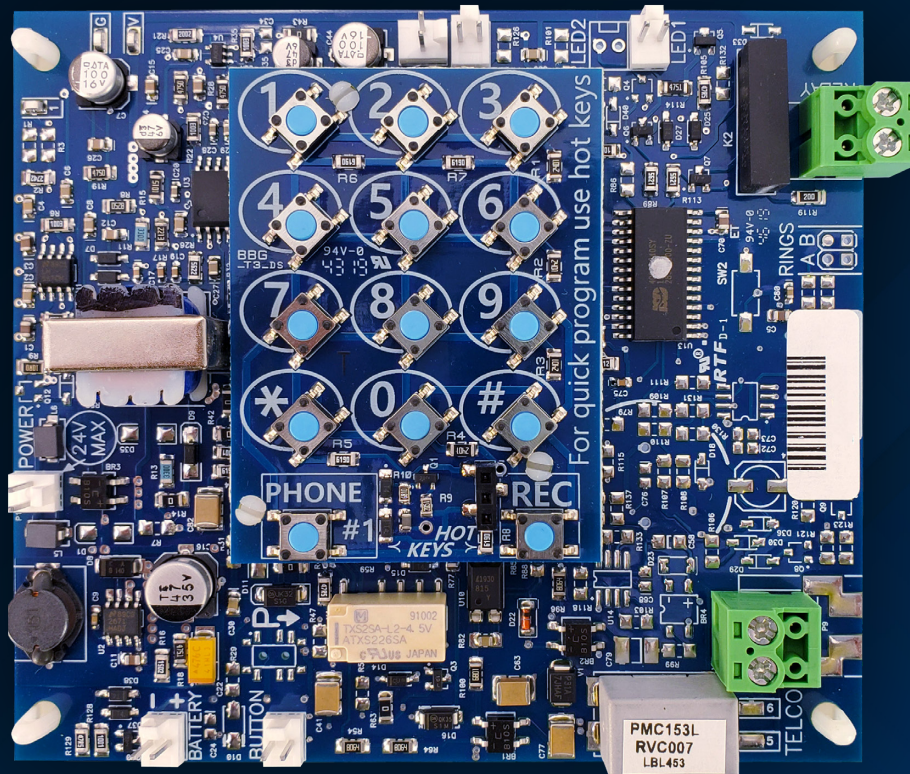
# COMMERCIAL

## EMERGENCY PHONES

- One Touch Programming
- Line Loss Compatible
- Battery Back-Up

901  
SERIES

- Multiple Phones Per Line
- Cell System Ready
- 110v AC Powered



**SENTRY****901 SERIES**

Install Type	Cabinet/Box Mount
Size	7.5" H x 5" W x 2" D
Standard Finish	● Matte Red

Our AC powered 901 Series Sentry model fits right into most existing telephone cabinets. This model comes standard with a red matte finish faceplate, and other matte finish colors are also available.

**901 SERIES** ET901A-3

Moisture Protection Available

**NAUTILUS****901 SERIES**

Install Type	Surface Mount
Size	6.75" H x 4.75" W x 2.25" D
Standard Finish	● Red

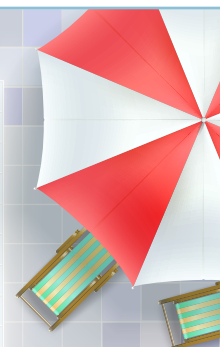
Looking for a weather sealed ADA emergency phone? Our AC powered 901 Series Nautilus Emergency Phone is all-weather, which makes it perfect for outdoor installations wherever there is a high risk of water damage to ordinary phones.

**901 SERIES** ET901A-WS**DID YOU  
KNOW?**

Our Nautilus Emergency Phones are All-Weather and a Great Choice for Outdoor Applications. Perfect for Poolside, Parking Garages, Campuses and Any Other Wet Location!



For humid & damp locations, when all-weather protection is not needed, we offer a moisture resistant protective coating on most of our phones. Just look for this icon!



## 9 AC POWERED ADA EMERGENCY PHONES

### LIBERATOR

901 SERIES

Install Type	Surface Mount
Size	6.75" H x 6.25" W x 1" D
Standard Finish	● Brushed Stainless Steel

The AC powered 901 Series Liberator's low profile makes it ideal for installations where space is limited or cutting a hole is not possible or economical. Custom finishes are available upon request.

901 SERIES ET901A-LPSS-3



Moisture Protection Available



### FORTRESS

901 SERIES

Install Type	Flush Mount
Faceplate Size	12.5" H x 10" W x .125" Thick
Cutout Size	7.75" H x 5" W x 2" D
Standard Finish	● Brushed Stainless Steel

The 901 Series Fortress is typically used to either upgrade your cabinet mount units or simply replace old or damaged phone cabinets. It's also ideal for adding a phone where there is no existing cabinet.

901 SERIES ET1901A-3



Moisture Protection Available



### FORTRESS mini

901 SERIES

Install Type	Flush Mount
Faceplate Size	10.5" H x 6.5" W x .125" Thick
Cutout Size	7.75" H x 5" W x 2" D
Standard Finish	● Brushed Stainless Steel

The 901 Series Fortress Mini is the same as the Fortress but with a smaller faceplate for those tight fitting areas. Upgrade your cabinet mount units or simply replace old or damaged phone cabinets.

901 SERIES ET1901A-S-3



Moisture Protection Available

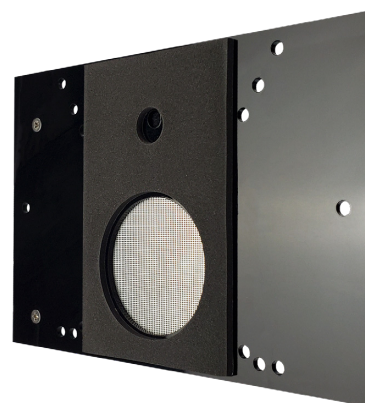




**UNIVERSAL COMMANDER****901 SERIES**

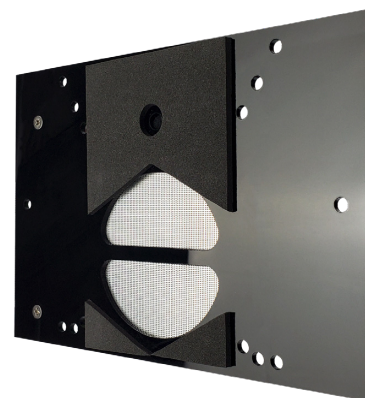
Install Type **COP / Fixture Mount**  
 Size **4.75" H x 7" W x 1.5" D**

The 901 Series Universal Commander provides a seamless solution for replacing or upgrading fixture mount phones. This AC powered emergency phone fits behind a single grill pattern for a clean symmetrical look.

**901 SERIES** ET901A-OEMU-3**DUAL COMMANDER****901 SERIES**

Install Type **COP / Fixture Mount**  
 Size **4.75" H x 7" W x 1.5" D**

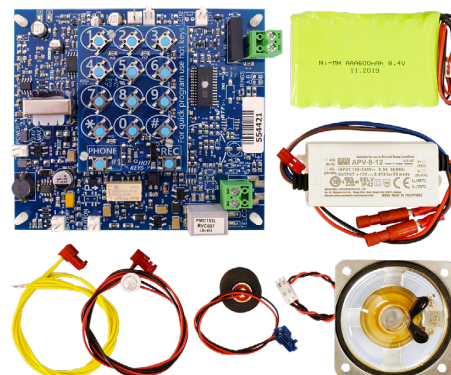
The 901 Series Dual Commander saves space and cost by allowing the emergency phone to be used as an annunciator speaker. When an emergency call is made, the phone automatically seizes the speaker.

**901 SERIES** ET901A-OEMV**KIT PHONE****901 SERIES**

KIT INCLUDES

- 901 Series Phone
- Power Supply
- Adhesive Stand-offs
- 8.4v Ni-MH Backup Battery
- Microphone, Speaker & LED
- Button Hook-up Wire

Our 901 Series Kit Phone can replace any AC powered ADA emergency phone in the field, quickly & easily. Each kit includes all the wiring and parts necessary for a fully functioning phone.

**901 SERIES** ET-901PDL-KT

## SUREcom<sup>®</sup>

The SUREcom system is a low-cost solution for providing communication from the machine room and/or lobby to your elevator's emergency phones, and provides emergency personnel the ability to override a call that is in-progress.

Complies with ASME regulation A17.1 2.26.1.5.10, 1996-2000 & A17.1 2.27.1.1.4, 2002-2007

Control Box

ET92C

Control Box with 1 Line Handset

ET92C-1

Control Box with 2 Line Handset

ET92C-2

Control Box with 4 Line Handset

ET92C-4

- Multiple handset options available.
- UL listed metal enclosure and power supply.
- RJ11 jacks & screw terminals for connections.
- Battery backup included.



## LINE LOSS MONITORING

The ASME 17.1 code requires emergency phone lines to be monitored. If you lose power to your phone-line, on-site personnel need to know about it through both a visual and an audible signal.

We've developed a low-cost, simple and effective method of complying. When a phone line goes down, our 901 series emergency phones send a signal through a relay to our Line Loss Indicator. That signal activates an audible warning along with a warning light within our Line Loss Display Panel. Monitor up to 8 phone lines, each with their own LED indicator.

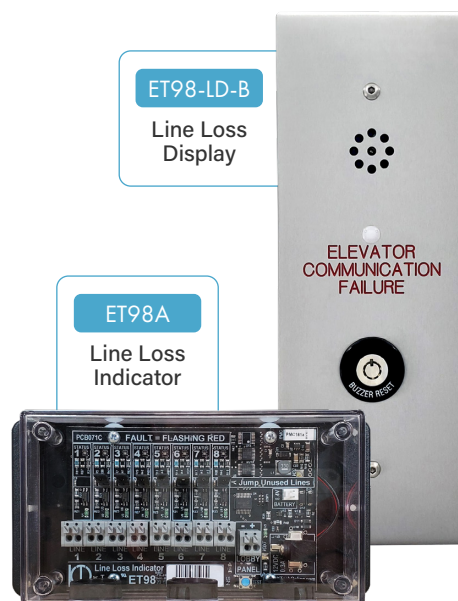
Complies with ASME regulation A17.1 Providing Both Visual & Audible Alerts On-site.

Line Loss Indicator

ET98A

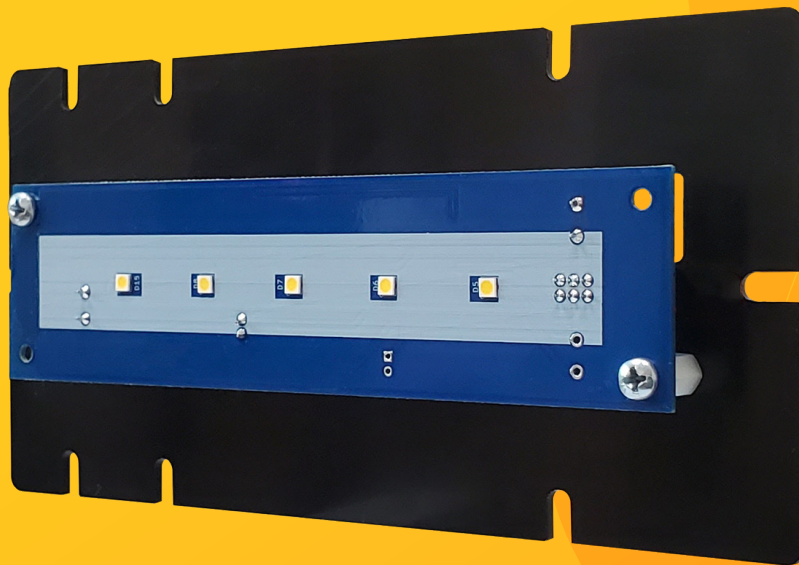
Line Loss Display

ET98-LD-B



# LIGHT KIT

This universal LED emergency light kit is great for replacing or upgrading COP mounted emergency lights. Directly replaces most elevator emergency light systems.



## Features

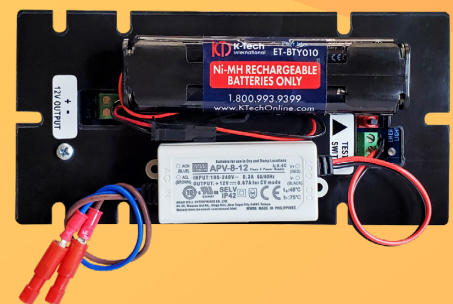
EL-101-KT

Built in the USA, this kit utilizes 5 super bright LEDs, includes a 12v two-wire output screw terminal, back-up battery and a built-in test switch.

The attached 12Vdc power supply accepts 100 - 240 VAC. The battery pack is charged and continuously maintained for back-up while powered.

A fully charged, integrated battery pack will provide a minimum of 4 hours of LED illumination during interrupted power.

### Integrated Back-Up Battery for Easier Installation!





# K-Tech

## C O N N E C T

### 2-Way Text Messaging & Video Communication System

K-Tech Connect is a simple yet robust hardware/software solution which integrates text messaging and live video capabilities into the elevator to meet the 2019 ASME 17.1 code requirements for elevator safety communications standards.

Our hardware and software were developed hand-in-hand to communicate with each other over a standard internet connection. K-Tech Connect systems are meant to work alongside voice communication, as a companion to traditional emergency phones, not as a replacement.

The K-Tech Connect web application was designed with the user in mind. A clean and simple-to-use interface provides everything needed to activate and manage devices, request device monitoring, respond quickly to elevator emergencies, and to easily interact with elevator passengers.

## K-TECH CONNECT | EMERGENCY DEVICE

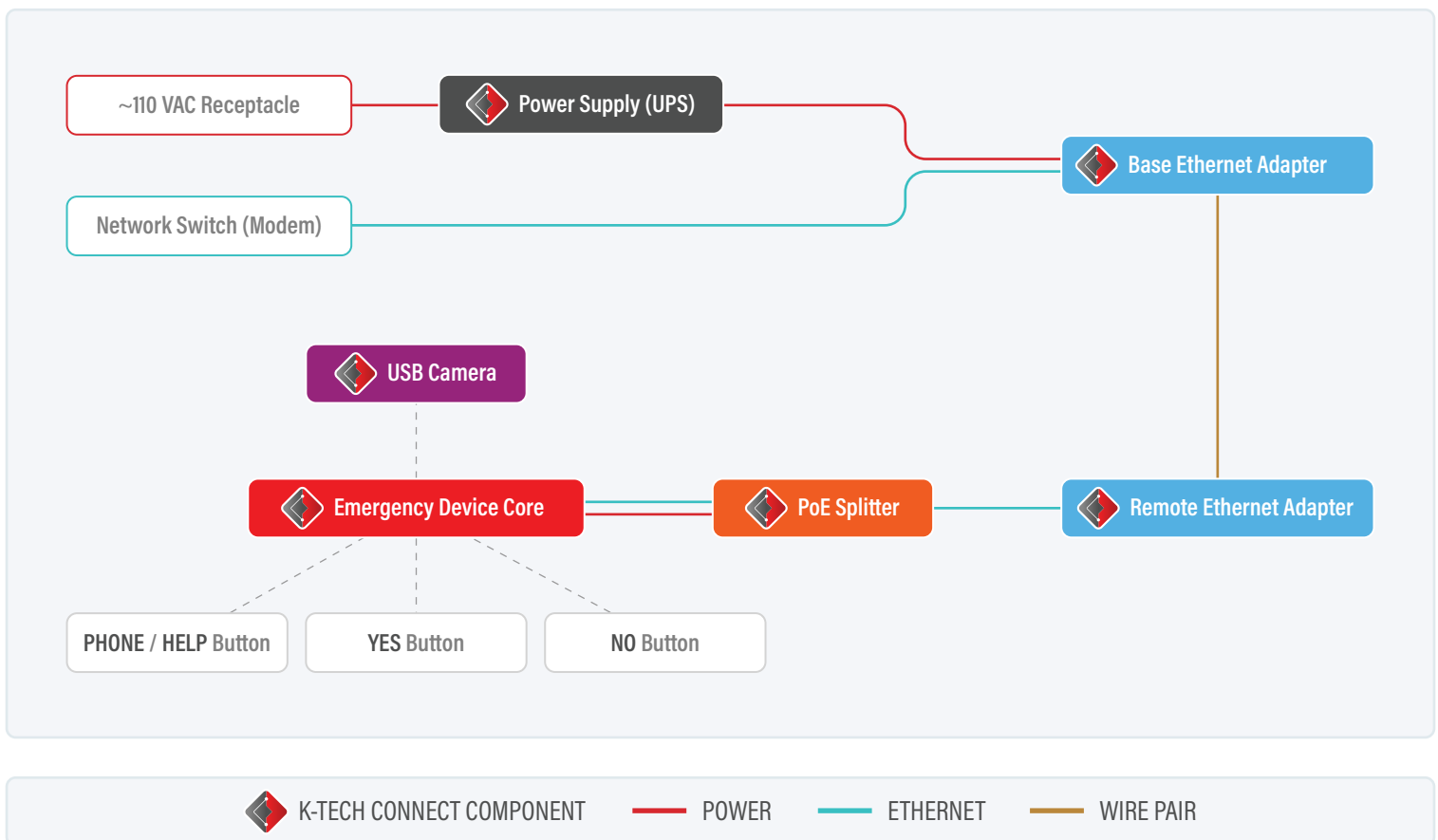
K-Tech Connect Emergency Devices are intended for installation inside the elevator cab. These devices facilitate video and two-way text communication between call operators or emergency responders and the passengers inside the elevator.

Through the K-Tech Connect web application, operators can ask passengers questions via text messages, which appear on the device's screen within the cab. Passengers can respond to these questions by using the Yes and No buttons found on the car operating panel.

Additionally, the emergency device is equipped with a USB camera that transmits a live video feed to the web application, enabling the operator to monitor the elevator cab and its occupants.

### SYSTEM OVERVIEW

The complete K-Tech Connect Emergency Device system consists of the components below that feature the K-Tech Connect logo.



K-Tech Connect Emergency Devices are meant to work alongside the elevator's emergency phone, adding live video and text communication, while still relying on standard voice communication.

## K-TECH CONNECT | LOBBY STATION

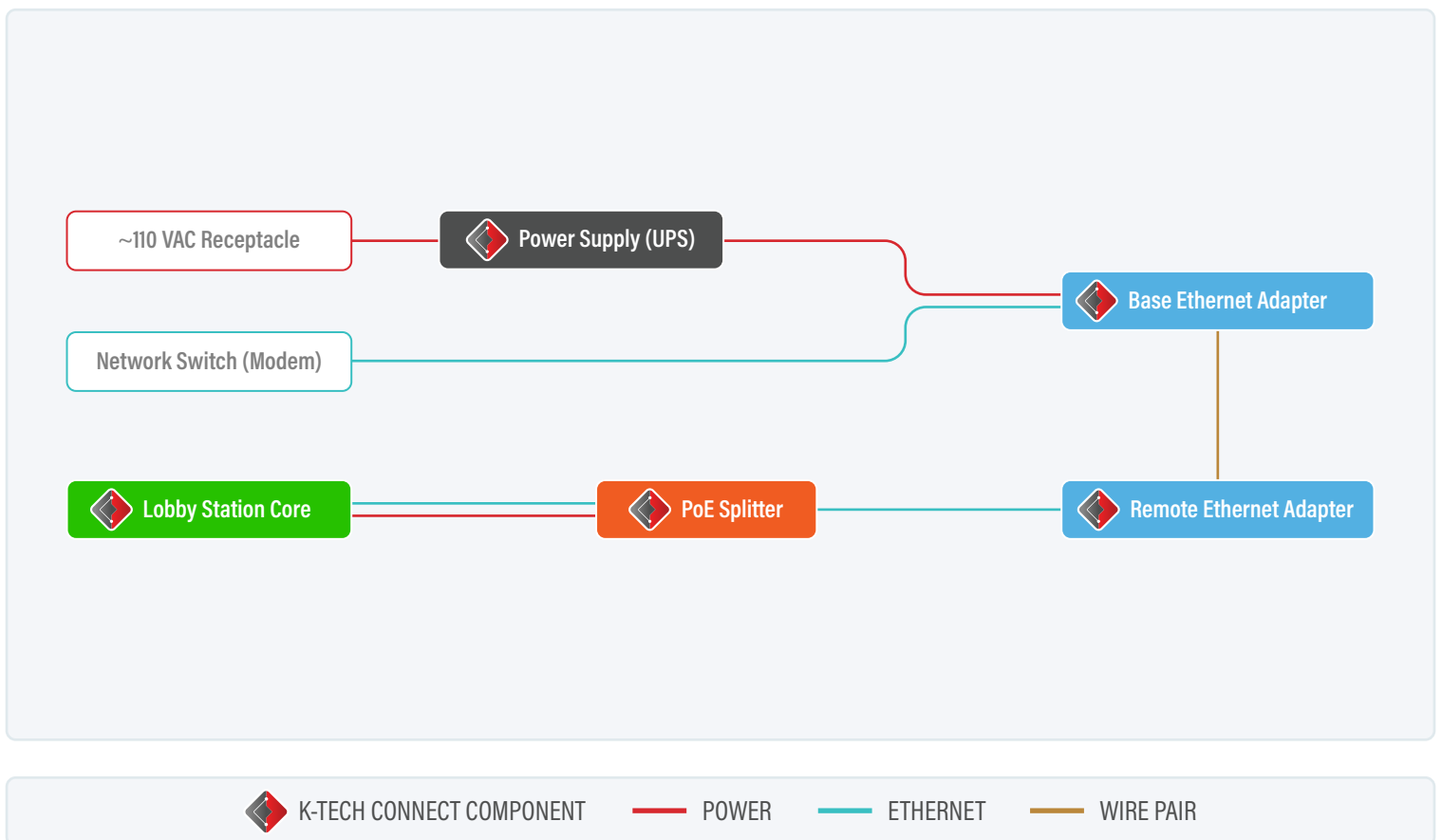
K-Tech Connect Lobby Stations are designed for on-site installation, enabling emergency personnel in the building to easily communicate with our K-Tech Connect Emergency Devices located in the elevators of the same facility.

Thanks to the built-in touchscreen and easy-to-navigate user interface, emergency responders can efficiently send and receive text messages to those inside the elevator. A single tap also enables them to view the live video feed from the elevator.

Multiple emergency devices and lobby stations can be linked together seamlessly through the K-Tech Connect web application, no hardwiring between devices is necessary.

### SYSTEM OVERVIEW

The complete K-Tech Connect Lobby Station system consists of the components below that feature the K-Tech Connect logo.



K-Tech Connect Lobby Stations are meant to work alongside the lobby panel handset, adding live video and text communication, while still relying on standard voice communication.



## EMERGENCY DEVICE CORE

KC601-S5CB-3

Install Type	COP / Fixture Mount
Overall Size	6" W x 4.375" H x 1.75" D
Screen Size	5" Diagonal



This product is the core component of the K-Tech Connect Emergency Device System and is installed in the elevator cab to provide text and video communications during an elevator emergency.

This device features a microcomputer and 5" LCD screen mounted on a bracket designed for COP installations.

It also includes screw terminals for connecting the YES, NO, and PUSH TO CALL buttons found on the car panel.

SYSTEM  
COMPONENT(S)



## LOBBY STATION CORE

KC601-LS-S7CB

Install Type	Box / Fixture Mount
Overall Size	8.25" W x 5.375" H x 1.375" D
Screen Size	7" Diagonal

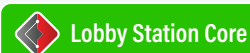


Serving as the main component of the K-Tech Connect Lobby Station System, this product allows video viewing and text messaging with any K-Tech Connect Emergency Device.

It is typically installed on-site for easy access by emergency personnel.

The device features a microcomputer and 7" LCD touchscreen mounted on a laser cut acetal bracket for installation.

SYSTEM  
COMPONENT(S)



## LOBBY STATION

KC601-LS

Install Type **Surface Mount**  
Overall Size **9.875" W x 11.875" H x 6.125" D**

This K-Tech Connect Lobby Station package is designed for on-site installation, enabling emergency personnel in the building to easily communicate with our K-Tech Connect Emergency Devices located in the elevators of the same facility.

The KC601-LS-S7CB Lobby Station Core is securely housed within a locking NEMA 4X enclosure.

The PoE Splitter (KC601-ES) and pair of Ethernet Adapters (KC601-EA-2) are included in the Lobby Station package.



### SYSTEM COMPONENT(S)



Lobby Station Core



PoE Splitter



Base &amp; Remote Ethernet Adapters

## LOBBY STATION PLUS

KC601-LSP

Install Type **Surface Mount**  
Overall Size **11.81" W x 15.75" H x 5.9" D**

This K-Tech Connect Lobby Station Plus package is designed for on-site installation, enabling emergency personnel in the building to easily communicate with our K-Tech Connect Emergency Devices and Emergency Phones located in the elevators of the same facility.

The Lobby Station Core (KC601-LS-S7CB) and Telephone Handset are securely housed within a locking NEMA 4X enclosure.

The PoE Splitter (KC601-ES) and pair of Ethernet Adapters (KC601-EA-2) are included in the Lobby Station Plus package.



### SYSTEM COMPONENT(S)



Lobby Station Core



PoE Splitter



Base &amp; Remote Ethernet Adapters

Telephone Handset

## ETHERNET ADAPTERS

KC601-EA-2

Overall Size (Base) 5" W x 4" H x 1.1" D  
Overall Size (Remote) 5.187" W x 1" H x 1" D

This pair of Ethernet Adapters simplifies the process of transferring power and data over a two-wire setup, generally a twisted shielded pair.

The Base Unit receives power from a typical 110v outlet and connects to the internet through a router or switch using a CAT6 cable.

The Remote Unit transmits PoE+ over a CAT6 cable.



### SYSTEM COMPONENT(S)



Base Ethernet Adapter



Remote Ethernet Adapter

## POE SPLITTER

KC601-ES

Overall Size 4.1875" W x 2" H x 1" D  
PoE Spec PoE+ (IEEE 802.3at)

The PoE Splitter is essential for delivering both internet and power to our K-Tech Connect Emergency Devices or Lobby Stations using PoE+.

This device takes in a PoE+ signal through a CAT6 cable (typically from our ethernet adapters) and divides it into two outputs: one for internet access and the other for power.



### SYSTEM COMPONENT(S)



PoE Splitter

USB CAMERA

KC601-CA

Install Type

COP / Fixture Mount

Overall Size

2.25" W x 2.375" H x 3" D



This COP mount USB camera is designed with a 180 degree fish-eye lens, clear dome cover and a built-in glare shield.

Loosen the knurled knob to easily pivot and rotate the camera, then tighten to secure once you have just the right view.

This camera is compatible with any of our K-Tech Connect Emergency Devices and comes with a 3ft USB cable.

SYSTEM  
COMPONENT(S)



USB CAMERA

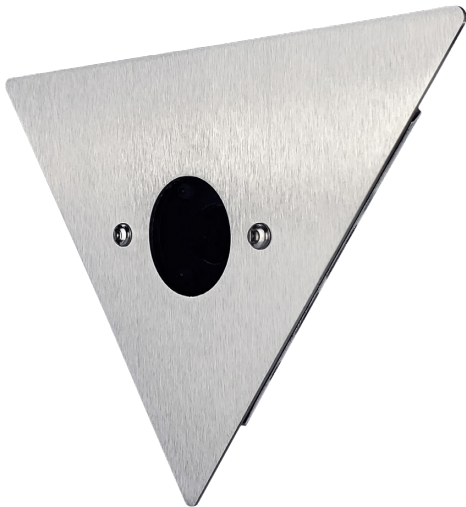
KC601-CA-3

Install Type

Corner Mount

Overall Size

7.875" W x 5.625" H x 1.75" D

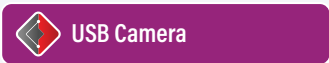


Featuring a 180-degree fish-eye lens, this corner-mounted USB camera is protected by a 1/4" thick clear acrylic plate, brushed stainless steel faceplate and a smoked lens cover.

Positioned in the upper corner of the cab, this camera angles downward to provide a complete top-down view of the elevator and its passengers, effectively eliminating blind spots.

This camera is compatible with all K-Tech Connect Emergency Devices and comes equipped with a 3ft USB cable and a 15ft USB extension cable for increased installation flexibility.

SYSTEM  
COMPONENT(S)



## POWER SUPPLY

KC601-UPS

Install Type	Wall Mount
Overall Size	13" W x 4.25" H x 5.5" D
Back-up Time	4+ Hours



The K-Tech Connect power supply is compatible with all of our K-Tech Connect emergency devices and lobby stations.

This unit provides continuous power while plugged in to a 110v receptacle and also supplies more than 4 hours of back-up power during a power failure.

This component is typically placed in the machine room when installed as part of the K-Tech Connect Emergency Device System.

### SYSTEM COMPONENT(S)



Save time & hassle with American Made K-Tech products & 100% USA based tech support, here when you need us.

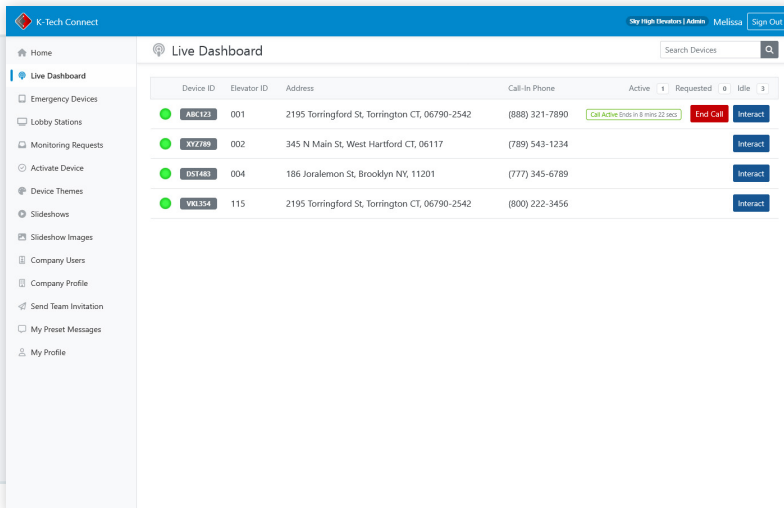
## WHAT DO YOU GET WHEN YOU BUY FROM K-TECH?

- High Quality American-made Products
- We Provide a 1 Year Manufacturer's Warranty on K-Tech Connect Products and a 3 year Manufacturer's Warranty on All Other Products
- A Direct Line to USA Based Tech Support, Free
- Fast Shipping on Products, Parts & Replacements
- An Extremely Knowledgeable Sales & Support Team
- Little to No Lead Time on Most of Our Products





## DASHBOARD VIEW | ELEVATORS AT A GLANCE



The K-Tech Connect web app features an all-in-one dashboard designed for device monitoring and text/video communication.

You can quickly recognize emergency call requests and respond instantly, with the option to call the cab directly from the dashboard.

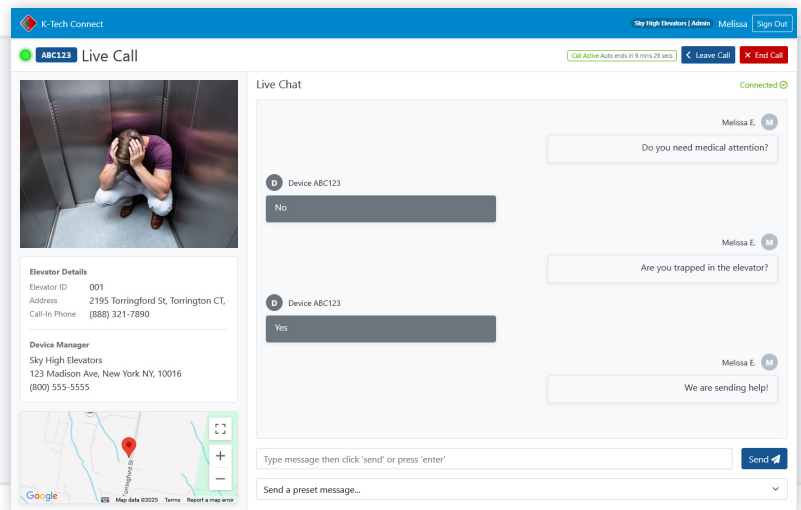
The dashboard also tracks the connection status of each device, offering a visual alert if a device loses its internet connection and is no longer reachable.

## LIVE CALL VIEW | DETAILS THAT MATTER

When an emergency call is active, the live call view can be accessed by multiple agents and emergency personnel at the same time.

See vital information such as a video feed, map, building address and elevator identifier, all on a single screen.

Text messaging is also integrated into this view, allowing free form messaging as well as custom preset messages.



## COMPLETE CONTROL | MANAGE EVERYTHING

Once your company has created an account with us, setting up users and adding K-Tech Connect devices is simple. Company administrators can add agents, technicians and other administrators with just a few clicks.

Easily add and update device information such as location, elevator identifier, and call-in phone number. With a growing list of call centers already registered with us, getting your devices monitored takes just minutes.

Device managers and call center agents have full access to the dashboard and live call views so no one misses a beat. All help requests and text message history is saved for future review if ever needed.

Our web application uses SSL encryption, ensuring secure and private data transmission.



## FAQS | YOU ASKED. WE ANSWERED.

### Do K-Tech Connect devices include voice communication?

No, our devices provide video and text capabilities only and are meant to work alongside a standard emergency phone system.

### Who has access to view video or to send and receive text messages?

Only device managers and assigned call centers have access.

### Is there a subscription fee for the web application?

No, our web application is free to use.

### Do you need internet access for K-Tech Connect devices to work?

Yes, each device needs internet access to communicate with our servers and to stream video.

### Does any router work with K-Tech Connect devices?

Any router that can supply ~10mbps bandwidth per device will be sufficient. Multiple devices can be run off of a single router as long as enough bandwidth is supplied and the router has at least one port per device.

### Do we need to open up our firewalls?

Firewalls that block inbound traffic do not need to be opened up. If your firewall filters outbound traffic, some destination urls will need to be whitelisted. Ask our support team or visit [www.ktechonline.com](http://www.ktechonline.com) for more details about the K-Tech Connect web app security features.

### Is the video from the elevator cab recorded?

No, the video feed is transmitted directly from the cab to the user, without being recorded.

### How do we identify a K-Tech Connect device when an emergency call comes in?

The K-Tech Connect web application will send out an email alert when help is requested.

# *Elevator Load Weighing & Performance Systems*

## **K-Weigh™**

Through the years, those looking to accurately weigh anything, large or small, have relied on strain gauge technology for accuracy and longterm reliability. Using this superior, time-tested method of weighing, the K-Weigh™ provides a universal and cost-saving answer to even the most complex elevator load weighing environments. It is ideal for both modernizations and new construction of isolated and non-isolated elevators. The K-Weigh™ supplies information to the controller necessary to optimize elevator traffic flow and improve passenger safety and comfort. Our load weighing systems are backed by decades of in-house experience in engineering, production & world class technical support!

**ROPE**  **K-Weigh™**

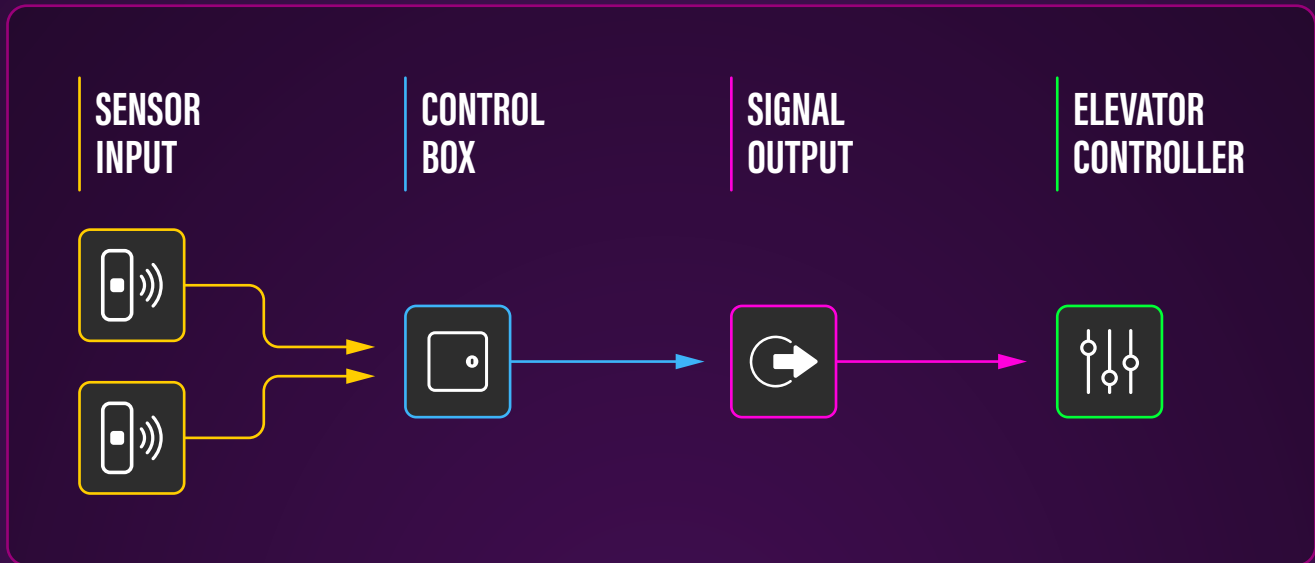
**CROSS-HEAD**  **K-Weigh™**

- Optimize Traffic Flow
- Ensure Passenger Safety
- Provide a Smooth & Comfortable Ride
- Conserve Energy & Reduce Maintenance
- Protect Against Overload
- Provide Equipment Protection
- Minimize Starts & Stops
- Help Cancel Fake Hall Calls
- Facilitate Efficient Trips
- Eliminate Lag Time On Starts
- Provide Smooth Acceleration & Deceleration

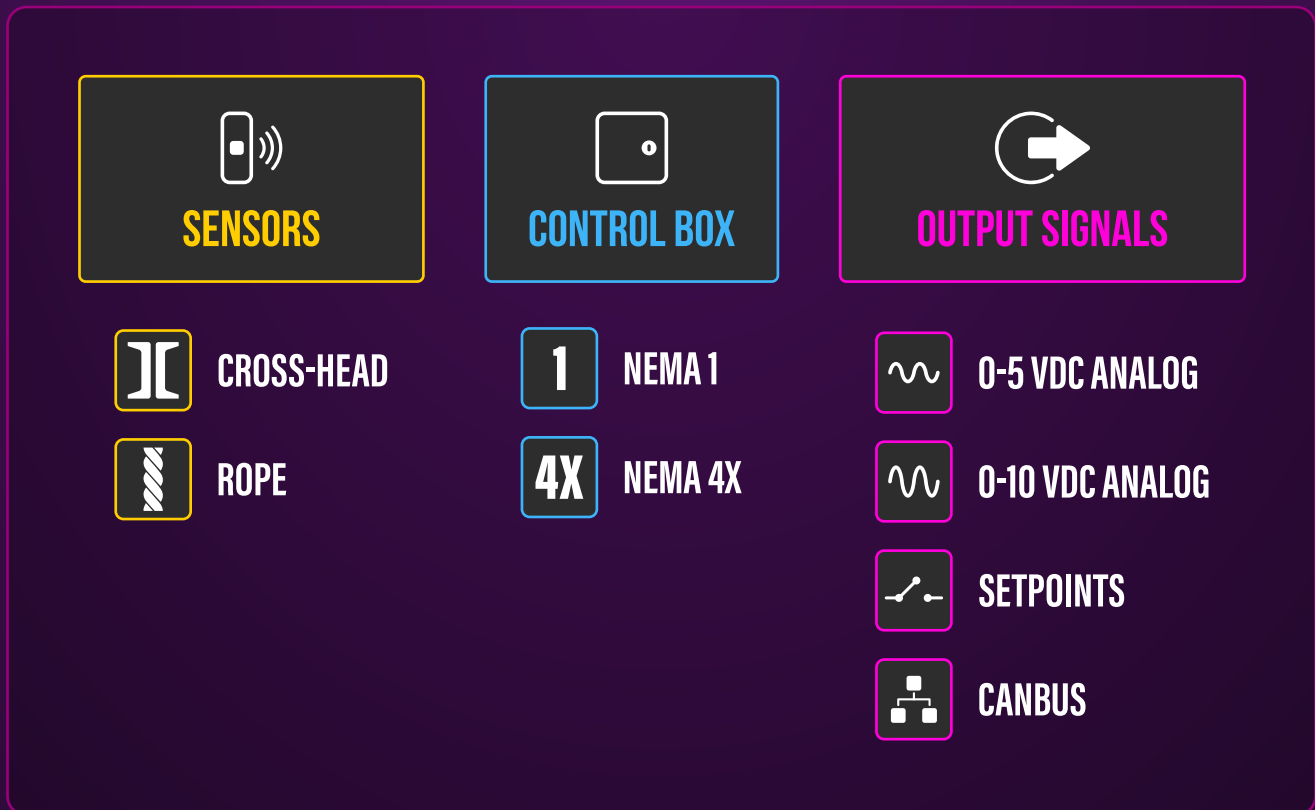
SOME FEATURES ARE CONTROLLER-DEPENDENT



## K-WEIGH COMPONENT WIRING OVERVIEW



## K-WEIGH COMPONENT OPTIONS



# ROPE K-Weigh™

Our Rope K-Weigh™ elevator load weighing & performance systems are American-made and built to last. The easy-to-install rope sensors mount to your elevator's cables to measure the car's total hanging weight as well as the in-car load. The sensors can be installed on any cable from 1/2" to 5/8" diameter, with just a wrench or ratchet.

Each system includes rope sensors and a control box. Depending on the model, the control box output types can include analog signals, setpoints or CANbus.

## ROPE K-Weigh™

### High Output 2 Sensor System

Sensors Included	2 Rope Sensors
Control Box Rating	Nema 1
Control Box Size	8.5" H x 10.5" W x 4" D
Output Types	Analog, Setpoint
Analog Output Signal	0-10 VDC
Setpoints	4 Setpoints with N/O and N/C options



ROPE  LW5202H-S4-RS-2

## ROPE K-Weigh™

### High Output 4 Sensor System

Sensors Included	4 Rope Sensors
Control Box Rating	Nema 1
Control Box Size	8.5" H x 10.5" W x 4" D
Output Types	Analog, Setpoint
Analog Output Signal	0-10 VDC
Setpoints	4 Setpoints with N/O and N/C options



ROPE  LW5202H-S4-RS-4

## ROPE K-Weigh™

### CANbus 4 Sensor System

Sensors Included	4 Rope Sensors
Control Box Rating	Nema 1
Control Box Size	8.5" H x 10.5" W x 4" D
Output Types	CANbus
CAN Message Frame	11-bit message identifier, 2.0A
CAN Baud Rate	Selectable



ROPE LW5202L-CAN-RS-4

## ROPE K-Weigh™

### 4X Nema 4 Sensor System

Sensors Included	4 Rope Sensors
Control Box Rating	Nema 4X
Control Box Size	8.5" H x 10.5" W x 5" D
Output Types	Analog, Setpoint
Analog Output Signal	0-10 VDC
Setpoints	4 Setpoints with N/O and N/C options



ROPE LW5202H-S4-RS-4-N

## ROPE K-Weigh™

### Single Sensor Kit

Sensors Included	1 Rope Sensor
------------------	---------------

Monitor up to 8 elevator cables by adding these high performance individual rope sensors to your new or existing Rope K-Weigh system. These sensors are compatible with all of our Rope K-Weigh™ systems except for the 4X Nema system.



ROPE LW-RS1



# CROSS-HEAD K-Weigh™

Our Cross-head K-Weigh™ elevator load weighing & performance systems are American-made and built to last. The cross-head sensors mount to your elevator's structural cross-member to measure the car's total hanging weight, as well as the in-car load.

Each system includes cross-head sensors, mounting hardware and a control box. Depending on the model, the control box output types can include analog signals, setpoints or CANbus.

## CROSS-HEAD K-Weigh™

### High Output 1 Sensor System

Sensors Included	1 Cross-head Sensor
Control Box Rating	Nema 1
Control Box Size	6.5" H x 8.5" W x 4" D
Output Types	Analog, Setpoint
Analog Output Signal	0-10 VDC
Setpoints	4 Setpoints with N/O and N/C options



CROSS-HEAD  LW5201H-S4

## CROSS-HEAD K-Weigh™

### High Output 2 Sensor System

Sensors Included	2 Cross-head Sensors
Control Box Rating	Nema 1
Control Box Size	6.5" H x 8.5" W x 4" D
Output Types	Analog, Setpoint
Analog Output Signal	0-10 VDC
Setpoints	4 Setpoints with N/O and N/C options



CROSS-HEAD  LW5202H-S4



**CROSS-HEAD K-Weigh™**

## CANbus 2 Sensor System

Sensors Included	2 Cross-head Sensors
Control Box Rating	Nema 1
Control Box Size	6.5" H x 8.5" W x 4" D
Output Types	CANbus
CAN Message Frame	11-bit message identifier, 2.0A
CAN Baud Rate	Selectable

**CROSS-HEAD K-Weigh™** LW5202L-CAN**CROSS-HEAD K-Weigh™**

## 4X Nema 2 Sensor System

Sensors Included	2 Cross-head Sensors
Control Box Rating	Nema 4X
Control Box Size	4.75" H x 7.875" W x 3" D
Output Types	Analog, Setpoint
Analog Output Signal	0-10 VDC
Setpoints	4 Setpoints with N/O and N/C options

**CROSS-HEAD K-Weigh™** LW5202H-S4-NEMA**CROSS-HEAD K-Weigh™**

## Single Sensor Kit

Sensors Included	1 Cross-head Sensor
------------------	---------------------

K-Tech's high performance cross-head sensor kits include all the mounting hardware needed for installation and utilizes strain gauge technology for accurate a repeatable measuring. Compatible with all of our Cross-head K-Weigh™ systems except for the 4X Nema system.

**CROSS-HEAD K-Weigh™** LW-52SENKIT

# ≡ CORRUGATED PLASTIC ≡ **BEAR-I-CADE™**

Our corrugated plastic barricades are lightweight, and designed with interlocking tabs so you can set them up fast and efficiently. The panels are made of rigid 6mm solid color extruded plastic with each panel measuring 32" wide by 42" tall.

## ANY INDUSTRY. ANYTIME. ANYWHERE.

- Building & Construction
- Schools & Colleges
- Restaurants & Eateries
- Elevators & Escalators
- Malls & Retail
- Government
- Road & Traffic
- Maintenance & Repair
- Manufacturing
- Indoor & Outdoor Events



These panels are available online in packs of 3, 4 & 25.  
Wholesale quantities and palletizing services are available, just call us!

### **BEAR-I-CADE™**

Configuration	<b>3 Panel Kit with Locks &amp; Anchors</b>
Panel Size	<b>32" W x 42" H x .25" Thick</b>
Panel Material	<b>Corrugated Polypropylene</b>

Each of the 3 corrugated barricade panels in this kit are lightweight and designed with interlocking tabs to quickly connect multiple panels together to fit any application. The 42" panel height along with locks & anchors ensure you are up to code.

BI426A-3K



### **BEAR-I-CADE™**

Configuration	<b>4 Panel Kit with Locks &amp; Anchors</b>
Panel Size	<b>32" W x 42" H x .25" Thick</b>
Panel Material	<b>Corrugated Polypropylene</b>

Each of the 4 corrugated barricade panels in this kit are lightweight and designed with interlocking tabs to quickly connect multiple panels together to fit any application. The 42" panel height along with locks & anchors ensure you are up to code.

BI426A-4K



### **BEAR-I-CADE™**

Configuration	<b>25 Panel Pack</b>
Panel Size	<b>32" W x 42" H x .25" Thick</b>
Panel Material	<b>Corrugated Polypropylene</b>

The corrugated barricade panels in this 25 pack are lightweight and designed with interlocking tabs to quickly connect multiple panels together to fit any application. The 42" panel height ensures you are up to code. Locks & anchors sold separately.

BI426A-25





# Grizzly BEAR-I-CADE™

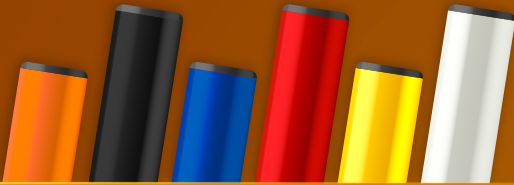
Our new top-of-the line tubular barricades are here! The Grizzly Bear-i-cade™ system is modular & customizable, built using high quality materials along with strong, long-lasting hardware. We created two panel heights (46" & 76") so you can choose what works best for your application, both of which exceed the code for barricade height requirements. The core of our Grizzly Bear-i-cade™ is a single panel comprised of a tubular frame and a 13 oz vinyl banner. You can easily connect multiple panels together using our hinge kits, or you can create a stand-alone panel by adding our stabilizer kit. Our tubular frames are available in 6 unique colors, and the banners can be printed with any custom artwork.



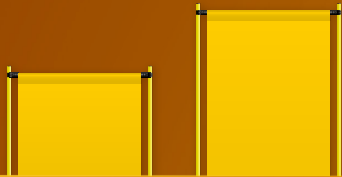
**BIGGER. BOLDER. BETTER.**

# The Best Barricades in the Business!

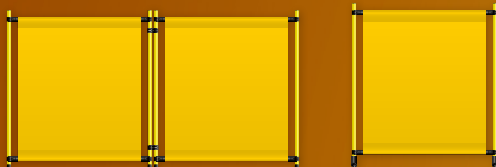
## 6 FRAME COLORS



## 46" OR 76" HEIGHT



## HINGED OR STAND-ALONE



**46**  
SERIES

**76**  
SERIES

The Superior Sign & Barricade Solution

46" & 76" Code Compliant Sizes

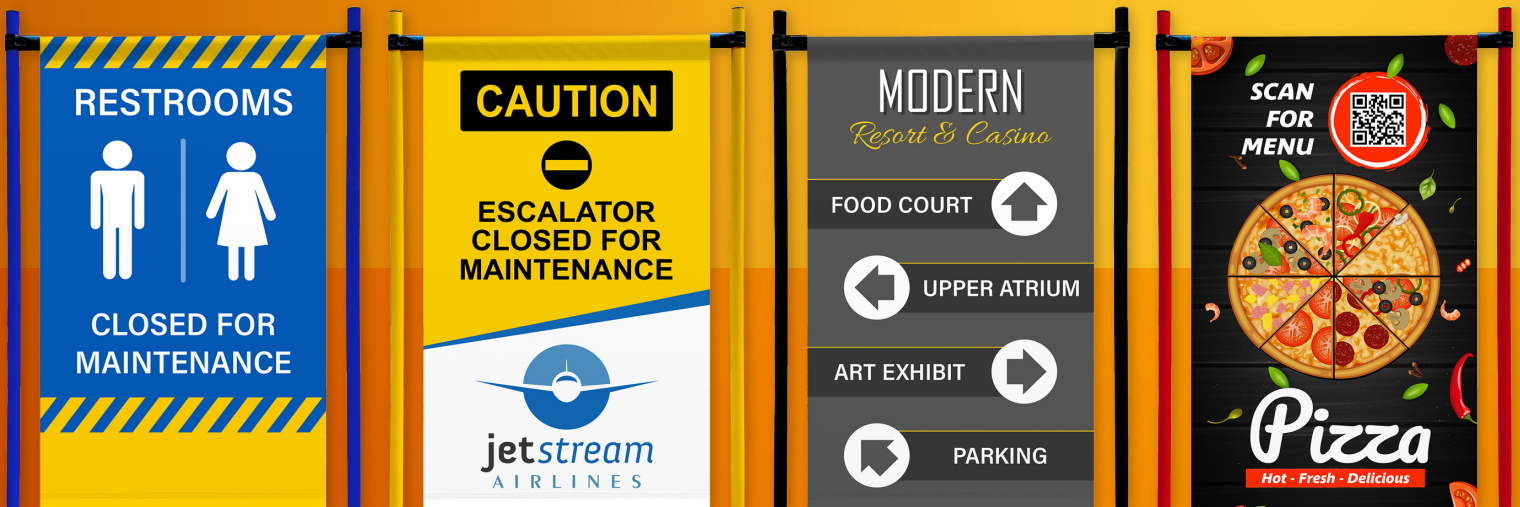
6 Frame Colors & Unlimited Print Colors

Stand-Alone or Hinged Options

Fast & Easy Assembly with One Tool

Strong, Lightweight & Easily Transported

YOUR DESIGN. YOUR STYLE. NO MINIMUMS.





46 SERIES

Configuration	1 Panel Standalone
Frame Color	Yellow
Panel Size	42.5" W x 46" H x 1.25" D
Overall Size	42.5" W x 46" H x 19" D
Banner Size	36" W x 42" H



46 SERIES BT46-YE-1PS



46 SERIES

Configuration	3 Panel Hinged
Frame Color	Yellow
Panel Size	42.5" W x 46" H x 1.25" D
Overall Size	129" W x 46" H x 1.25" D
Banner Size	36" W x 42" H



46 SERIES BT46-YE-3P



46 SERIES

Configuration	4 Panel Hinged
Frame Color	Yellow
Panel Size	42.5" W x 46" H x 1.25" D
Overall Size	172" W x 46" H x 1.25" D
Banner Size	36" W x 42" H



46 SERIES BT46-YE-4P





## 76 SERIES

Configuration	1 Panel Standalone
Frame Color	Yellow
Panel Size	42.5" W x 76" H x 1.25" D
Overall Size	42.5" W x 76" H x 19" D
Banner Size	36" W x 72" H



76 SERIES BT76-YE-1PS



## 76 SERIES

Configuration	3 Panel Hinged
Frame Color	Yellow
Panel Size	42.5" W x 76" H x 1.25" D
Overall Size	129" W x 76" H x 1.25" D
Banner Size	36" W x 72" H



76 SERIES BT76-YE-3P



## 76 SERIES

Configuration	4 Panel Hinged
Frame Color	Yellow
Panel Size	42.5" W x 76" H x 1.25" D
Overall Size	172" W x 76" H x 1.25" D
Banner Size	36" W x 72" H



76 SERIES BT76-YE-4P



**VIEW & ORDER ONLINE!**  
***www.KTechOnline.com***



**KTechOnline.com**



**1-800-993-9399**



**Sales@KTechOnline.com**

## FIND PRODUCTS FAST

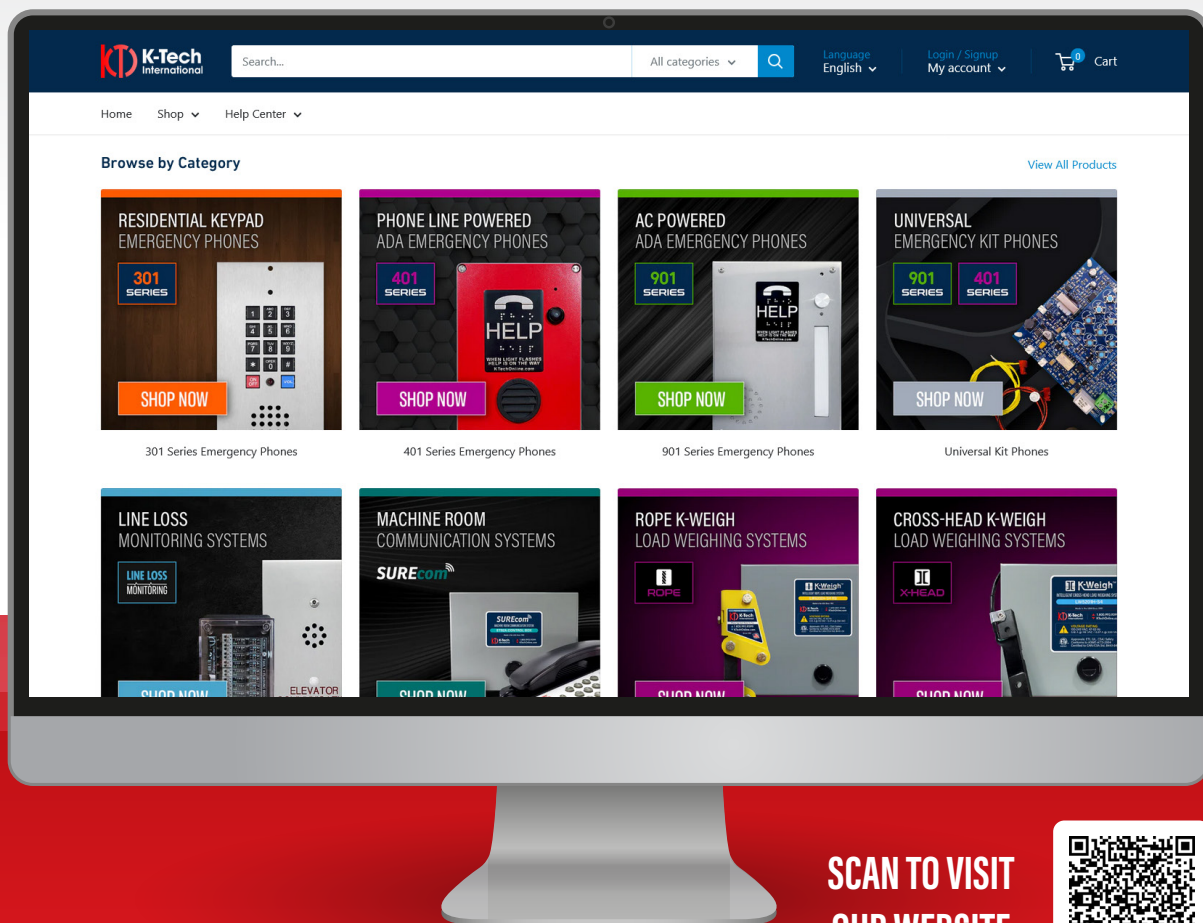
Browse Products by Category  
Search by Product Name & Sku  
Filter by Product Features & Price

## ROBUST PRODUCT PAGES

Product Highlights & Specs at a Glance  
Product Documentation Downloads  
High Quality Product Images

## ALL NEW HELP CENTER

Live Chat During Business Hours  
FAQ Section Organized by Category  
Product Manuals & Wiring Diagrams



**SCAN TO VISIT  
OUR WEBSITE**

